

# **AIRPORT BRIEFING 4 EFB APPLICATION PILOT USER GUIDE**

Copyright © 2025 Synapse Aviation, all rights reserved

## **Airport Briefing Pilot User Guide**

Copyright © 2025 Synapse Aviation, all rights reserved  
Str. New Delhi no. 11A  
1000 Skopje, N.Macedonia

This document supports version 4.0 of Synapse Aviation Airport Briefing for iOS and Windows.

The minimum operating system requirement for this release is iOS 16.0 or Windows 10. At the time of this release, Airport Briefing 4.0 has been tested, and is compatible with iOS 16.3

Controlling Document Number: SYN-ABPUG  
Revision: 2.0  
22-SEP-2025

## TABLE OF CONTENTS

1	INTRODUCTION .....	6
1.1	PURPOSE .....	6
1.2	APPLICABILITY.....	6
1.3	TERMINOLOGY .....	6
1.4	GLOSSARY.....	7
1.5	OVERVIEW .....	8
1.6	ADDITIONAL REFERENCES.....	9
1.7	TECHNICAL SUPPORT .....	9
1.8	SYSTEM REQUIREMENTS .....	10
1.9	UPDATE AND DEPLOYMENT CONSIDERATIONS.....	10
1.10	ABOUT INITIAL DOWNLOAD ON IOS .....	10
1.11	WHAT IS PRESERVED WHEN UPDATING THE APP .....	10
1.12	MANAGING AUTOMATIC APP UPDATES (IOS) .....	11
2	GETTING STARTED .....	12
2.1	BASIC TOUCH SCREEN GESTURES.....	12
2.2	BASIC DESKTOP CONTROLS.....	12
2.3	LOGIN .....	13
2.4	EULA.....	13
2.5	CONTENT MANAGEMENT PAGE.....	14
2.6	DATA FILTERING .....	17
2.7	QUICK ACCESS MENU .....	17
2.7.1	User Info .....	17
2.7.2	Data Status.....	18
2.7.3	App Version .....	18
2.7.4	Aircraft .....	18
2.7.5	Adjusting Font Size.....	18
2.7.6	Adjusting the Scale of the User Interface.....	18
2.7.7	Changing between Day and Night modes.....	18
2.7.8	Battery Mode.....	18

2.7.9	More Settings.....	18
2.7.10	Pilot User Guide .....	18
2.8	ACTIVE SELECTIONS AND COLOR CODING .....	19
3	DATA .....	20
3.1	ABOUT.....	20
3.2	Synapse Aviation data.....	20
3.3	Operator data.....	20
3.4	UPDATE MECHANISM .....	21
3.5	PERFORMING DATA UPDATE .....	21
4	INTERACTIVE ENROUTE INTERFACE .....	23
4.1	General Overview .....	23
4.1.1	Interaction .....	23
4.1.2	Header Bar .....	24
4.1.3	HIGH/LOW Enroute Data Toggle .....	24
4.1.4	DATA LAYERS Toolbar.....	25
4.1.5	Customization .....	26
4.1.6	Visual Highlights.....	26
5	AIRPORTS .....	33
5.1	BRIEFING PROCESS .....	33
5.2	USING THE BRIEFING FEATURE .....	33
5.2.1	Briefing Structure.....	33
5.2.2	Accessing the Briefing feature.....	33
5.2.3	Briefing Pages .....	33
5.2.4	Briefing Sections .....	33
5.3	USING THE 3D FEATURE.....	33
5.3.1	The benefit of interactive 3D.....	34
5.3.2	3D View Layout .....	34
5.3.3	Accessing the 3D feature.....	35
5.3.4	Slides or Programmed Instructions.....	35
5.3.5	Moving around the scene.....	36
5.3.6	Heading and Altitude information.....	36

5.3.7	Changing the Weather .....	37
5.3.8	Changing the Time of Day .....	37
5.3.9	Using the Pen Tool .....	38
5.3.10	Play a slide Voice-Over Audio .....	39
5.3.11	Show a slide Attachment.....	39
5.3.12	Flight Path Simulation .....	39
5.4	WORKING WITH MEDIA FILES .....	41
5.5	TAKING NOTES.....	42

# 1 INTRODUCTION

## 1.1 PURPOSE

This guide provides detailed instructions and considerations for the operation of Airport Briefing version 4.0 EFB application for iOS and Windows. This document is designed for pilots and support specialists who are new to Airport Briefing. These considerations were identified by Synapse Aviation and their implementation by the user contributes to a safe and efficient operation with this EFB application.

The guide does not substitute for, or prevail over, any of the terms of the Synapse Aviation application End User License Agreement (EULA) or the operating hardware and software product agreements.

This guide will be updated as necessary in case of changes to the Airport Briefing application, in-service feedback, EASA, FAA, or other Aviation Authority requests, or any other valid reasons (e.g. upgrades or corrections).

## 1.2 APPLICABILITY

This guide applies to the Airport Briefing EFB Application used on iOS and Windows-based portable EFB (PEDs).

## 1.3 TERMINOLOGY

The terminology used in this manual is adapted to the level of compliance expected from the user:

- 'Should' is used to specify considerations identified as necessary to ensure safe Airport Briefing operations.
- 'Can', 'May' or 'recommended' is used to provide additional considerations for efficient operations. Adherence by the user with these considerations is recommended.

## 1.4 GLOSSARY

AMC	Acceptable Means of Compliance
APPR	Instrument Approach Procedure
ARINC	Aeronautical Radio Incorporated
EFB	Electronic Flight Bag
EASA	European Aviation Safety Agency
FAA	Federal Aviation Administration
FAR	Federal Aviation Regulation
GM	Guidance Material
HMI	Human Machine Interface
IATA	International Air Transport Association
ICAO	International Civil Aviation Organization
NAA	National Aviation Authority
NOP	Normal Operating Procedures
OEI	One-Engine Inoperative
OM	Operating Manual
OS	Operating System
PED	Portable Electronic Device
REF	3D reference slides or programmed instructions
SA	Synapse Aviation
SID	Standard Instrument Departure

## 1.5 OVERVIEW

Thank you for using Airport Briefing. Synapse Aviation 3D Scene Editor, Admin Panel, iOS and Windows EFB applications are continually modified to be fully compatible with the latest operating systems and devices.

Airport Briefing is a mobile electronic flight bag (EFB) solution designed for commercial, business, and private aviation. It provides structured, interactive, and customizable pre-flight briefing content to support flight crew competency qualification, enhance situational awareness, and improve decision-making under operational pressure.

With **Version 4**, Airport Briefing has been reimagined from the ground up. The new release introduces a modern user interface and significant feature upgrades that transform the way briefing content is created, delivered, and consumed.

### Core Components

The Airport Briefing software platform consists of two main components:

- **Admin Panel** – a cloud-based back-end that enables operators to create, manage, and distribute briefing content.
- **EFB Application** – the pilot-facing application for accessing, reviewing, and interacting with briefing material.

### Key Enhancements in Version 4

- **Interactive Enroute Interface** – pilots no longer navigate static airport lists; instead, they access a graphical, globe-based interface. Airports, routes, waypoints, and airspaces are presented in a single dynamic context.
- **Route and Area Briefings** – operators can define and publish content tied to entire flight paths or regions, covering FIR restrictions, contingency procedures, and country-specific cautions.
- **Flight Brief** – a consolidated view that intelligently combines all relevant content (airport, route, and area) into one streamlined briefing, contextualized to the planned flight.
- **Enhanced Customization** – operators can tailor the structure, formatting, and visualization of briefing content to reflect organizational and regulatory needs.

These upgrades mark a major step forward for Airport Briefing. By uniting airports, routes, and areas into a single interactive environment, Version 4 sets a new standard in briefing clarity and operational readiness.

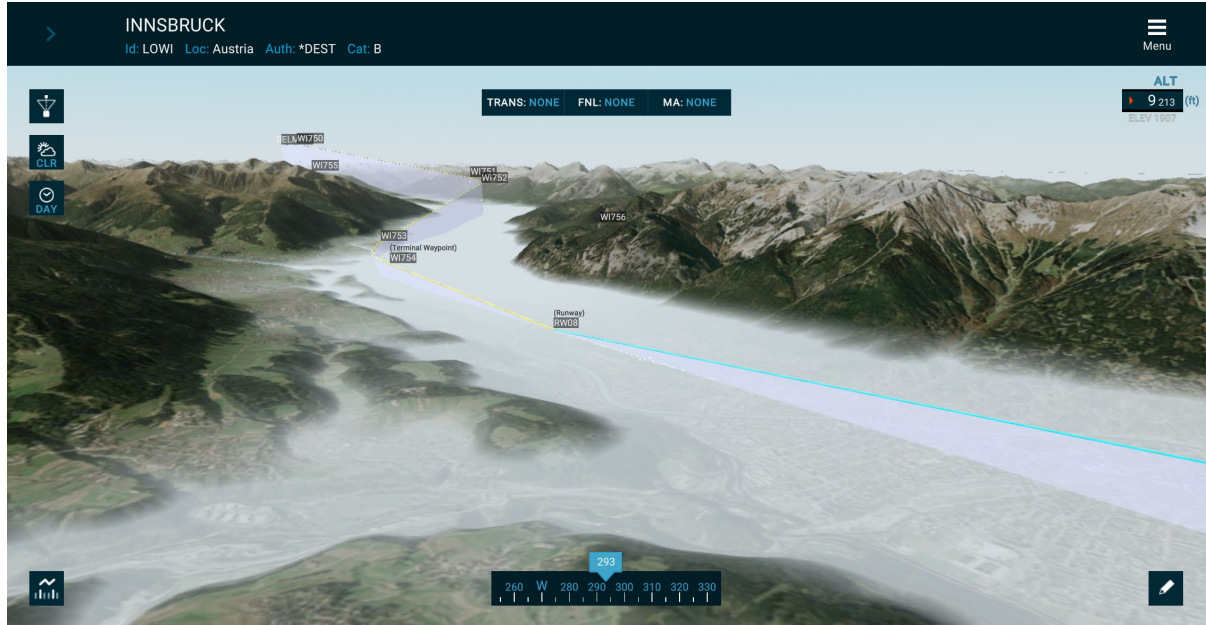


Figure 1 High fidelity interactive 3D graphics

**Important notes:**

- The system does not present an own-ship symbol, nor provides any information that can be used to derive the aircraft position
- Airport Briefing is not a navigation tool, nor any information it presents shall be considered for that purpose
- Airport Briefing does not calculate or output any mass and balance or performance information

**1.6 ADDITIONAL REFERENCES**

In addition to this User Guide, Synapse Aviation provides detailed, task-oriented training videos and documentation for Airport Briefing users on the web at the [link] [Airport Briefing Training and Documentation web page](#).

This User Guide can also be accessed via the Quick Access Menu button on the Airport Briefing top bar.

**1.7 TECHNICAL SUPPORT**

Many operators provide their own technical support for Airport Briefing. In addition, Synapse Aviation provides technical support during official business hours from 08:00 to 16:00 CET (Central European Time) at:

- International: +389 2 3113 963
- Email: support@airportbriefing.aero
- Synapse Aviation Customer Support Page on the Web at: [airportbriefing.aero](http://airportbriefing.aero)

## 1.8 SYSTEM REQUIREMENTS

The minimum operating system for Airport Briefing 4.0 is iPadOS 14.0 or Windows 10. At the time of release, Airport Briefing 4.0 has been tested and is compatible with iOS 18.6. The minimum device capability required to run Airport Briefing 4.0 on iOS devices is iPad Air (3rd generation) or equivalent (A12 chip or better). Devices running on the Windows platform require a minimum of 4GB RAM memory.

## 1.9 UPDATE AND DEPLOYMENT CONSIDERATIONS

The iOS version of Airport Briefing is released through available Apple distribution models. Only one version of the app can be downloaded to the iPad at a time. The windows installer application is available to enterprise customers only, via a dedicated channel.

It is recommended that you force close the Airport Briefing app before updating to a new version.

The Airport Briefing app requires up to 400 MB of available storage capacity on the iPad. The airport data, including subsequent data updates, may require up to several GB of available storage capacity. The variability in the storage capacity requirement is related to the number and size of the airports and coverage area.

**Note:** Basic 3D airport requires on average approximately 10-15 MB of storage capacity.

## 1.10 ABOUT INITIAL DOWNLOAD ON IOS

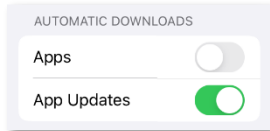
After you download Airport Briefing, you might need insert your user login credentials. Check with your Administrator for more details.

## 1.11 WHAT IS PRESERVED WHEN UPDATING THE APP

When Airport Briefing is updated from one version to another, the app preserves the following information:

- Customized app settings under user control, including account information and favorite airports.
- Installed airports and associated briefing data.
- Personal media files and notes

## 1.12 MANAGING AUTOMATIC APP UPDATES (IOS)



iPadOS allows applications to update automatically when the device is connected to power and Wi-Fi. While convenient, some operators may prefer to control when Airport Briefing updates are installed, to ensure consistency across fleets or to avoid unplanned version changes during operations.

### To disable automatic app updates on iPadOS:

1. Tap **Settings** from the Home Screen.
2. Tap **App Store**.
3. Under **Automatic Downloads**, switch **App Updates** to **OFF**.

**Note:** Disabling automatic updates affects only the App Store version of Airport Briefing. It does not affect recurring data updates delivered through Airport Briefing itself.

## 2 GETTING STARTED

Getting started with Airport Briefing is easy. You use basic tablet gestures or desktop controls to interact with the app.

### 2.1 BASIC TOUCH SCREEN GESTURES

Control mobile device apps using a few simple gestures – tap, touch and hold, swipe, scroll, and zoom.



**Tap.** Touch one finger lightly on the screen.



**Double Tap.**



**Drag.** Move one finger across the screen slowly.



**Swipe.** Move one finger across the screen quickly.



**Scroll.** Move one finger across the screen without lifting. Swipe to scroll quickly; touch the screen to stop scrolling.



**Zoom.** Place two fingers on the screen near each other. Spread them apart to zoom in, or move them toward each other to zoom out.



**Go Home (iOS).** Swipe up from the bottom edge of the screen to return to the Home Screen at any time.



**Quick Access Controls (iOS).** Swipe down from the top-right corner to open Control Center; touch and hold a control to reveal more options.

### 2.2 BASIC DESKTOP CONTROLS

Control desktop applications using a few simple keyboard and mouse controls.



**Click.** Click the left mouse button to select or interact with the items on the screen.



**Double Click.**



**Left Click.** See Click above.



**Double Click.**



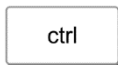
**Right Click.** Access hidden menu options.



**Scroll Wheel.** Used to scroll up and down on any page without using the vertical scroll bar. The scroll wheel can also be used as a third (middle) **button**.



**Numeric Key.**

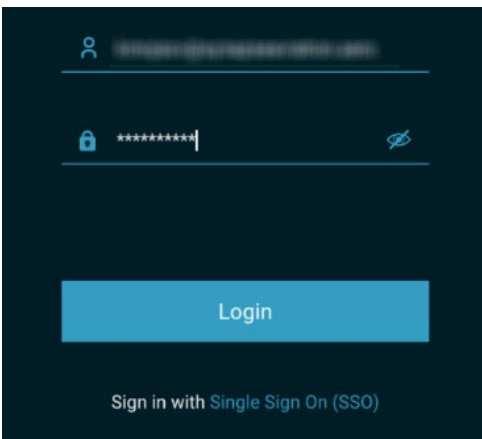


**Control Key.** Control key Ctrl is a modifier key that, when pressed in conjunction with another key or action, performs a special operation.



**Control + C.** Copy function (ctrl+v for paste, ctrl+z for undo)

## 2.3 LOGIN



On the login screen, you will find the following elements:

- **Username field** – tap to enter your company email address.
- **Password field** – tap to enter your password. The eye icon allows you to toggle visibility.
- **Login button** – tap to initiate the login process using the entered credentials.
- **Single Sign-On link** – tap if your company uses SSO. This will take you to the SSO login page.

Once you have entered your credentials and tapped the **Login button**, the system will verify your details. If successful, you will be directed to the content management page.

## 2.4 EULA

After logging in, Airport Briefing will prompt you to review and accept the **End-User License Agreement (EULA)**. The EULA outlines the terms under which the application may be used.

The content of the agreement may differ depending on your operator. Please read it carefully before proceeding.

**Note:** You must accept the EULA to continue using Airport Briefing. Access to the application is not possible without acceptance.

## 2.5 CONTENT MANAGEMENT PAGE

The **Content Management page** is where you download and manage briefing content. It appears automatically after the first login, when no briefing data has yet been downloaded. After the initial setup, you can return to this page anytime by tapping **Menu** (top-right of the Home screen) → **Manage Content**.

Content Management consists of two tabs:

- **Airports** — manage airport-specific briefing content.
- **Routes & Areas** — manage route- or area-based content.

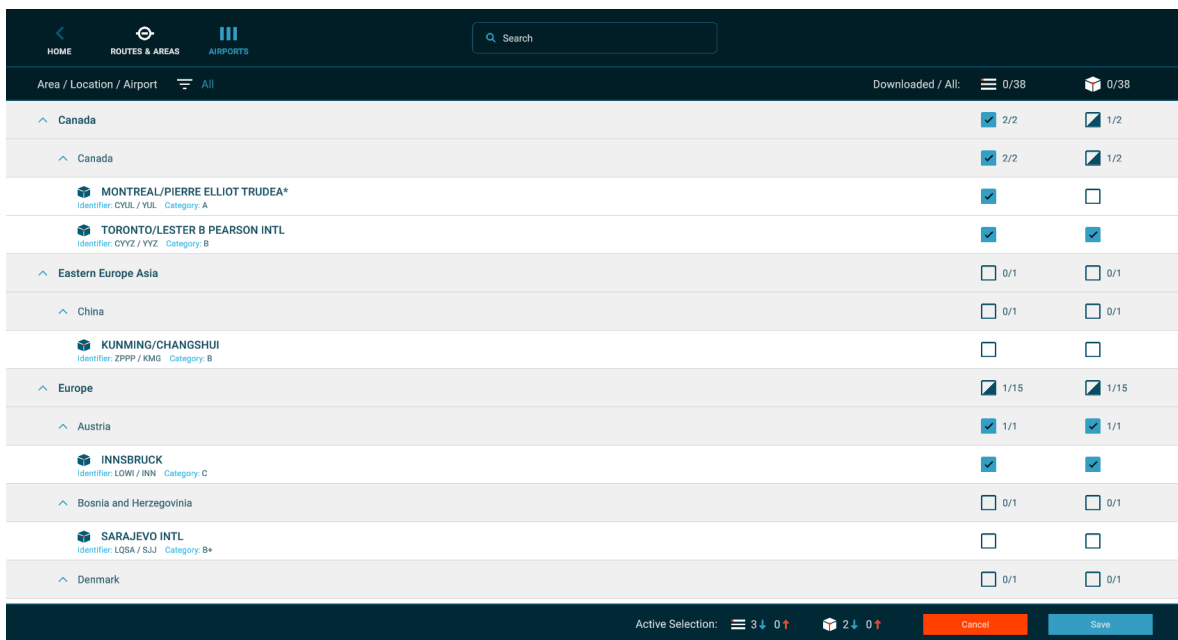


Figure 2 Content Management – Airport Briefs

### Understanding Data Types

With **Airport Briefing 4**, the application introduces a new Enroute interface powered by SkyData® from Lufthansa Systems. This provides complete global coverage of baseline navigation data, accessible at all times on the Enroute map (Home screen). It includes all airports (referred to as *Non-Company airports*), FIRs, controlled and restricted airspaces, navigation aids, airways, and other aeronautical objects.

From a briefing standpoint, airports listed in the Airports tab may include the following types of downloadable content:


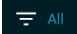
- **Briefing Data** — the primary briefing package, which may include structured textual content, and in some cases charts, graphics, and video files.
- **3D Data** — an additional package providing high-fidelity, interactive 3D visualization of the airport environment. **Note:** Selecting **3D Data** will also automatically include the corresponding **Briefing Data**.

**Note: Generic Nav Data (always included)** — baseline SkyData information (see above), available for all airports and airspaces, without requiring download.

### Using the Airports Tab



Airports are displayed in a hierarchy of **Area → Location → Airport**.

- **Selection checkboxes:**
  - Tap the checkbox next to an airport to select **Briefing Data**.
  - Tap the 3D checkbox to install both **3D Data** and its required **Briefing Data**.
  - Tap a country checkbox  to select all airports in that country.
- **Search and filter:**
  - Use the **Search bar** to find airports by ICAO/IATA ident, airport name, or country.
  - To select multiple individual airports, type the first identifier (ICAO or IATA), then select it by tapping the corresponding checkbox. Continue by typing a **semicolon ( ; )** in the search bar, which starts a new search instance. Repeat this process to build a custom multi-selection of specific airports.
  - Use the **Filter options**  **All** below the top bar to switch views:
    - **All** — all airports in the system.
    - **Downloaded** — airports already downloaded.
    - **Available for Download** — airports not yet downloaded.
- **Status bar (bottom of screen):** Appears when items are selected or removed, showing totals and providing actions:
  - **Save** — confirm the selection and download or remove content.
  - **Cancel** — clear the current selection.

Once the required data is installed, subsequent logins or application starts will take you directly to the **Enroute Home Screen**.

### Using the Routes & Areas tab



The **Routes & Areas tab** is used to install, update, or remove briefing content that is not tied to a single airport but instead applies to wider operational contexts.

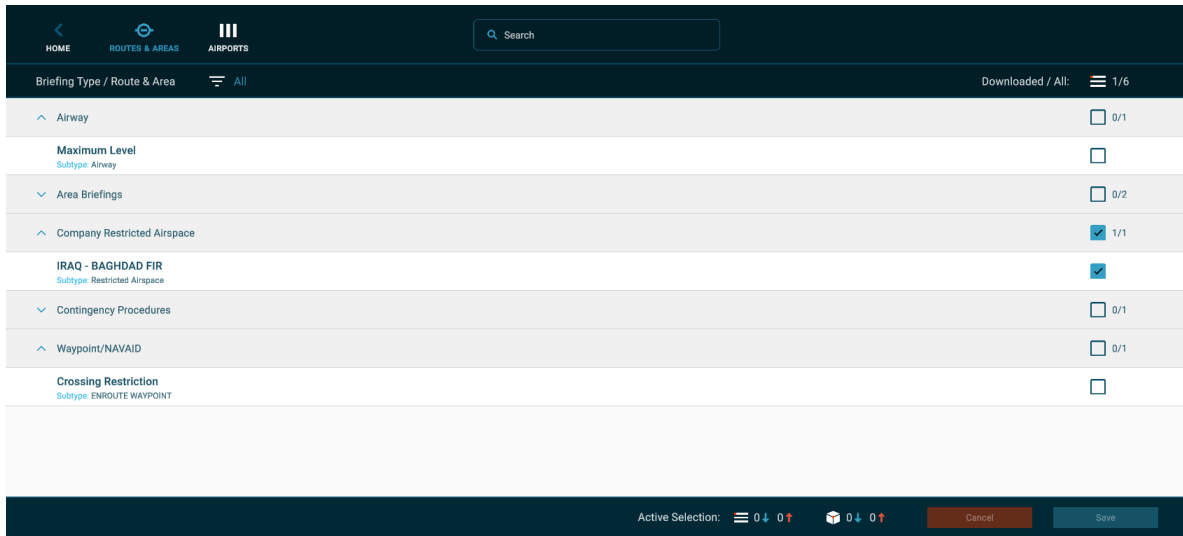


Figure 3 Content Management – Routes & Areas Briefs

## Structure

Content in this tab is organized by **Briefing Type**, with individual **Route and Area briefings** listed under each type. Examples include:

- **Contingency Procedures** (e.g., decompression, drift-down scenarios)
- **Airway Briefings** (e.g., Maximum Level restrictions)
- **Area Briefings** (e.g., NAT HLA)
- **Restricted Airspaces**
- **Waypoints/NAVAIDs** (e.g., crossing restrictions)

## Selection

- Each briefing has a **single checkbox** to install or remove its briefing package.
- Unlike airports, there is no 3D content option here — all selections refer only to briefing data (text, graphics, or other media).

## Unified Management

Selections made in the **Routes & Areas tab** are tracked together with selections from the **Airports tab**. You may mix and match airport, route, and area briefings in one session.

## Status Bar



At the bottom of the screen, the **status bar** shows your active selection. It updates in real time with the number of items selected, added, or removed. Two actions are available:

- **Save** — confirms the current selection, downloads new items, and removes any deselected content.
- **Cancel** — discards the current selection without changes.

Once saved, the selected route, area, and airport content becomes available immediately in Airport Briefing.

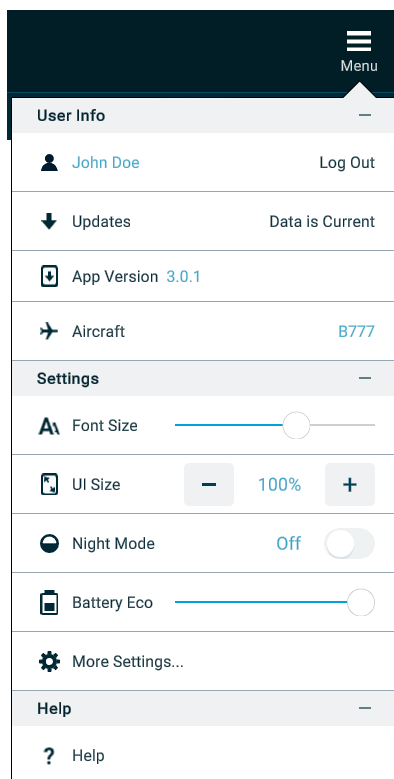
## 2.6 DATA FILTERING

Airport Briefing automatically filters briefing content so you only see data relevant to your operation. Filtering is based on two criteria:

- **Aircraft** — if your operator applies fleet- or aircraft-specific filtering, the data presented will depend on the aircraft type you select.
- **Date/Time** — all records are checked against their effective dates. Only content valid for the present date and time will be displayed.

This process runs automatically at the time of briefing. As a result, outdated or irrelevant records are excluded, ensuring you receive only applicable and current information.

## 2.7 QUICK ACCESS MENU

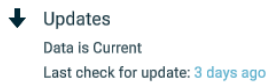


### 2.7.1 User Info

 John Doe

The first row shows the username under which Airport Briefing is registered to.

### 2.7.2 Data Status



The Updates gives you a quick information weather your data is current or not. You can tap on the 'Check Now' button to open the update window for more details.

### 2.7.3 App Version



The App Version field displays the currently installed version of Airport Briefing. On Windows devices and depending on the operator setup, an amber notification icon may show to indicate that a new version is available. If so, you can tap to open a separate window for more details.

### 2.7.4 Aircraft



If your operator is using the AOC/Fleet/Aircraft features, this is where your currently selected aircraft is displayed. Tap on the aircraft if you wish to change it.

### 2.7.5 Adjusting Font Size



The Font Size slider lets you increase or decrease the appearance or size of the dynamic briefing content throughout Airport Briefing.

### 2.7.6 Adjusting the Scale of the User Interface



The +/- controls let you change the size of the text, buttons, menus, and windows i.e., all static items throughout Airport Briefing.

### 2.7.7 Changing between Day and Night modes



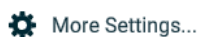
To adjust the display for optimal viewing in low-light conditions you can turn the Night Mode On by tapping on the toggle switch.

### 2.7.8 Battery Mode



The Battery Mode adjusts the overall performance and energy consumption by the Airport Briefing 3D engine. Select the 'Battery Eco' mode to preserve more battery life.

### 2.7.9 More Settings



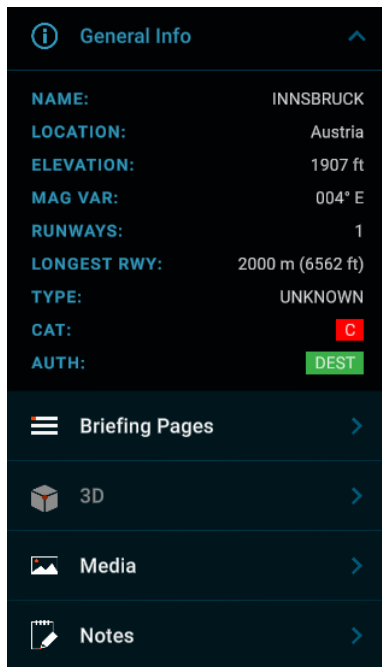
Tap on this option if you want to access all settings within Airport Briefing.

### 2.7.10 Pilot User Guide



This User Guide is available to you at any time without the need for internet. Simply tap on the 'Open' button to open in full-screen mode.

## 2.8 ACTIVE SELECTIONS AND COLOR CODING



- Inactive buttons & links have white labels.
- Actively selected buttons & links have blue labels.
- Disabled buttons & links have gray labels.

## 3 DATA

### 3.1 ABOUT

Airport Briefing uses two unique data layers. They differ in both **source** and **management responsibility**:

- **Synapse Aviation Data** – the baseline global data layer provided with every installation.
- **Operator Data** – additional content provided by your airline or operator, if enabled through an enterprise account.

### 3.2 SYNAPSE AVIATION DATA

This primary data layer is maintained by Synapse Aviation and includes:

- Airport data such as runways, lighting, gates, and MSA information.
- Navigation data for familiarization, including approaches, departures, nav aids, and waypoints.
- 3D airports specifically designed for use in Airport Briefing
- Data-driven briefing content such as 3D approaches (APPR) and 3D reference slides.

### 3.3 OPERATOR DATA

With an enterprise account, your operator may provide a secondary data layer tailored to fleet or company requirements. This can include::

- Operator- or fleet-specific briefing pages
- Additional reference slides or programmed instructions in 3D (**3D feature**)
- OEI or abnormal procedure slides in 3D (**3D feature**)
- Media files such as images and videos (**Media feature**)
- **Route and Area Briefings**, downloadable in the same way as airport briefings (see *Content Management* chapter)

### 3.4 UPDATE MECHANISM

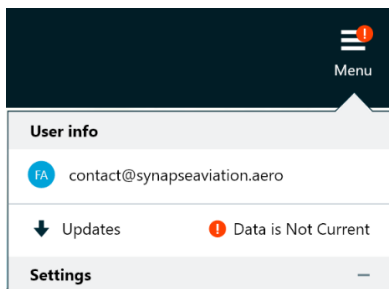
Airport Briefing uses a robust update mechanism to ensure briefing data is always current. Updates can be delivered either **automatically in the background** (if enabled by your operator) or through user-acknowledged notifications.

- **Automated Updates**

If configured by your airline/operator, updates are downloaded and installed automatically in the background. This process requires no user interaction.

- **Notifications**

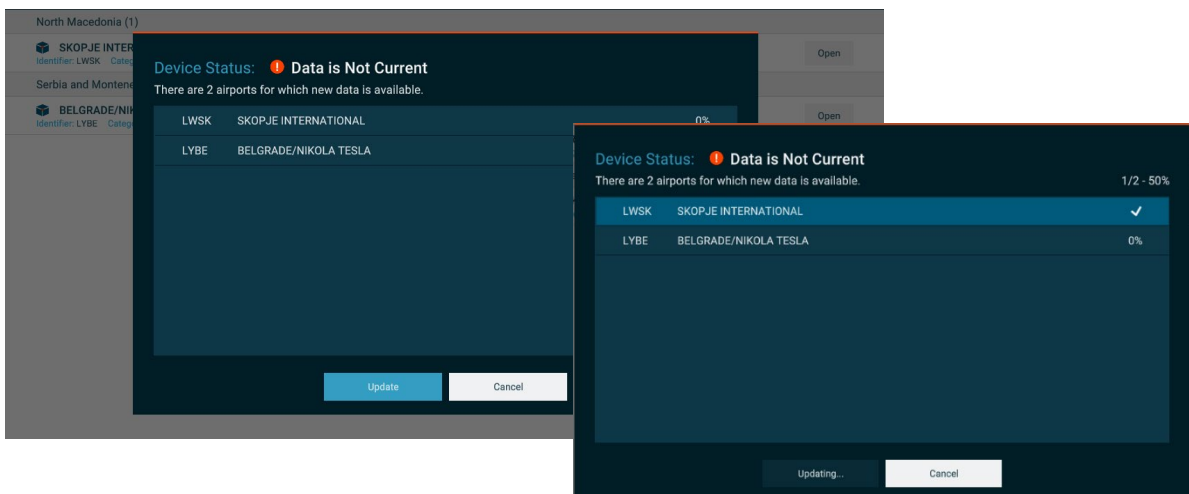
When automatic updates are not enabled, or when manual confirmation is required, Airport Briefing will notify you of available updates in the following ways:



1. Amber notification icon at the Quick Access Menu button
2. Amber notification icon and “Data is Not Current” message at the Updates section of the Quick Access Menu
3. iOS users will receive an update Push Notification

### 3.5 PERFORMING DATA UPDATE

Performing data updates in Airport Briefing is easy. You can tap anywhere on the Updates row from the Quick Access Menu to see more details about your pending update. The same can also be done via the Settings page.



Based on the provided information on the updates details page, your internet connection, and the time available, you can either start the update process immediately by tapping on the 'Update' button or postpone the same for later by cancelling the pop-up window.

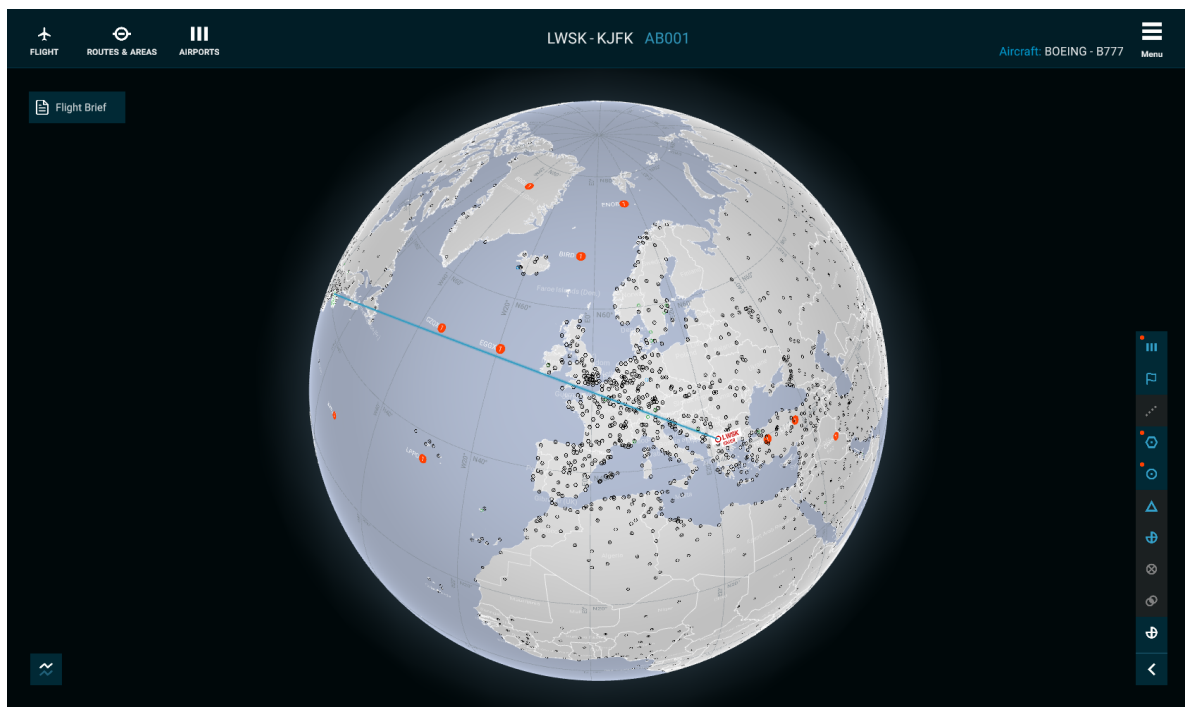
**IMPORTANT:** You are required to keep the **application window open** to allow for the update process to be completed. You can stop the process anytime by tapping on the 'Cancel' button, however, the process will likely start from the beginning the next time you choose to reactivate the update.

## 4 INTERACTIVE ENROUTE INTERFACE

### 4.1 GENERAL OVERVIEW

The Interactive Enroute Interface, also referred to as the Globe View, is the new default landing page after login (except for the very first login, which opens Content Management). This interface replaces the legacy airport list home screen and is now the central hub for accessing all briefing content within Airport Briefing.

The Enroute Interface provides a fully interactive, globe-based map displaying airports, routes, areas, and various navigation objects. Every element is positioned geographically and can be tapped for more information. This design provides a dynamic and intuitive overview of the operational environment, allowing pilots to interact directly with the airspace and briefing data relevant to their flight.



#### 4.1.1 Interaction

The En-Route Interface supports full user interaction with the globe. You can zoom and rotate using the standard gestures described at the beginning of this manual. A **double-tap** (or double-click) anywhere on the globe will instantly center that location on the screen.

Operational objects on the globe can be accessed directly:

- **Single tap** – opens the Location Inspector on the left side of the screen, showing details for the selected object.

- **Tap and hold** (≈1 second) – highlights the area with a circle and opens the Location Inspector with a list of all objects in that area. Objects are grouped by type (e.g., airports, FIRs, nav aids), and you can then select the specific item of interest.

Once an object is selected from the list, the Location Inspector updates to display detailed information for that object only. This interaction model allows you to explore the globe freely while quickly retrieving relevant briefing data.

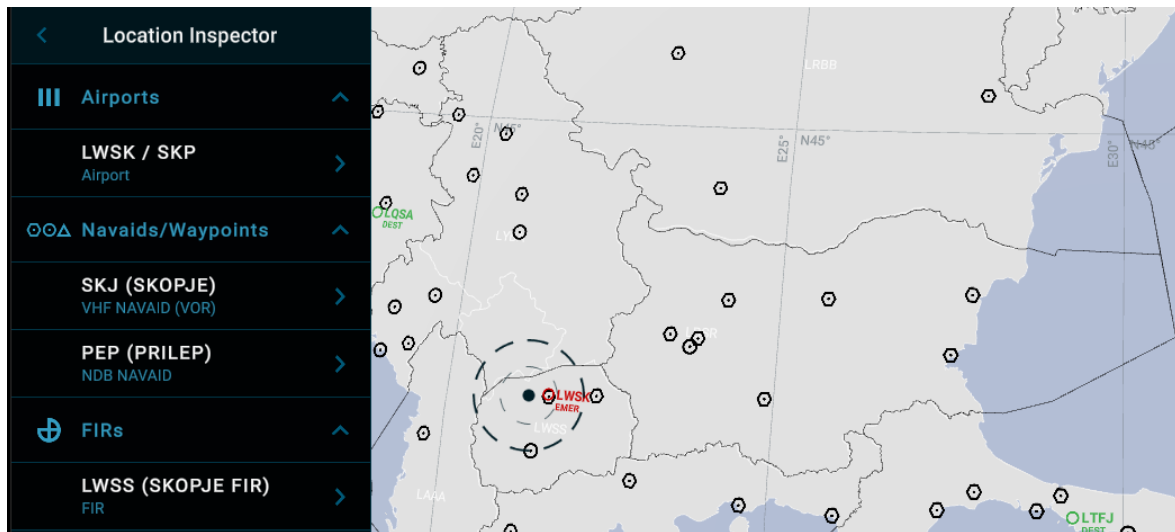
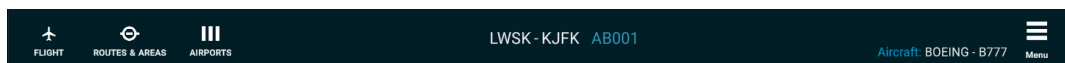


Figure 4 Location Inspector window

#### 4.1.2 Header Bar

At the top of the screen, the header provides navigation to key content areas:

- Flight Feature – access the consolidated Flight Brief.
- Routes & Areas – access operator-defined route and area briefings.
- Airports – access the airport library and related briefing content.
- Aircraft (top right) – displays the currently active aircraft type.
- Quick Access Menu (top right) – provides shortcuts to user settings, updates, and application information.
- Flight Information – departure and destination airports, flight number.



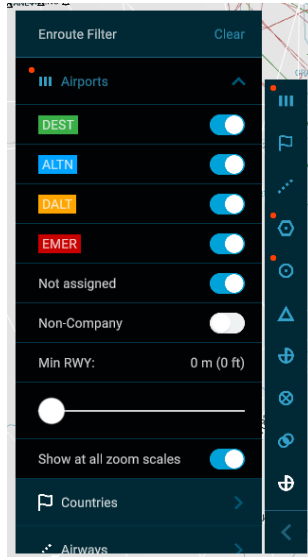
#### 4.1.3 HIGH/LOW Enroute Data Toggle

In the bottom-left corner of the screen, the Enroute Data Toggle allows you to switch between:

- High Enroute Data view
- Low Enroute Data view

This makes it possible to adapt the display to your operational phase or level of detail required.

#### 4.1.4 DATA LAYERS Toolbar



On the bottom-right side of the screen is a vertical toolbar containing data layer toggles. These controls allow you to show, hide, or filter navigation elements such as airports, waypoints, nav aids, FIR boundaries, airspaces, routes, and more.

- Each toggle has multiple states (visible, hidden, filtered).
- Many layers can be expanded into settings menus for more granular control.
- These settings allow you to tailor the visibility and behavior of data layers according to your operational needs.

The **Enroute Filter** allows you to control the visibility of airports displayed on the globe. Airports can be shown or hidden based on their role or classification.

#### Airport Authorizations / Classifications

You can toggle individual switches to show or hide airports according to their authorization or classification. These reflect your company’s internal authorizations and operational policies.

#### Non-Company Airports

A dedicated toggle controls the visibility of **Non-Company airports**. If configured, these represent all airports worldwide that fall outside your company’s network. While visible on the globe, briefing content is **not available** for these airports in Airport Briefing.

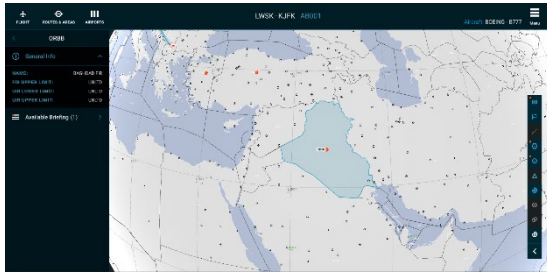
#### Additional Controls

- **Minimum Runway Length** – Use the slider to filter airports by minimum runway length.
- **Show at All Zoom Scales** – Ensures selected airports remain visible, regardless of zoom level.

### 4.1.5 Customization

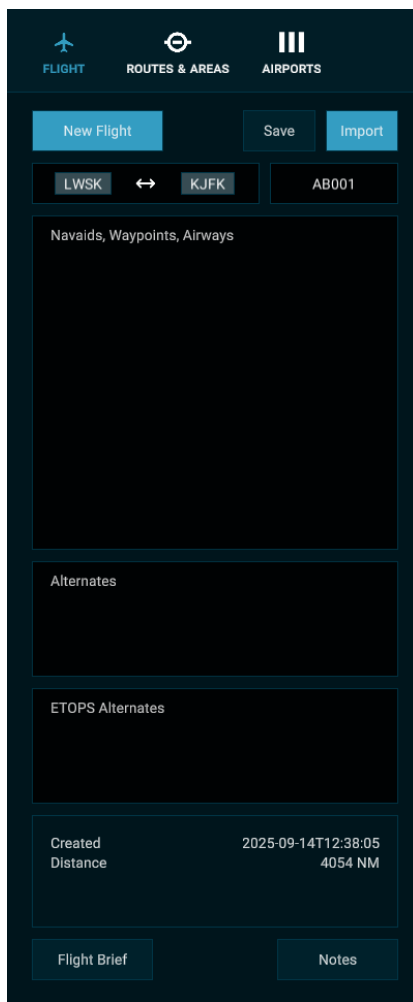
The overall look and feel of the globe, including the appearance of data layers, icons, and highlighted objects, is customizable by your airline/operator. This ensures the interface reflects organizational standards and operational requirements.

### 4.1.6 Visual Highlights



All briefable content, including company route and area briefs, are visually highlighted on the globe. This makes it easy to identify and access route- or area-specific operational content directly from the Enroute Interface.

## 4.2 FLIGHT FEATURE



The Flight feature allows you to define and manage a specific flight within Airport Briefing. It serves as the foundation for route visualization on the globe and enables access to downstream functionality such as the all-important **Flight Brief**.

### Creating a Flight

- Departure and Arrival – Enter the departure and arrival airports. These fields are mandatory. Once entered, a track line (great circle) is displayed on the globe connecting the two airports.
- Routing – Additional route details such as nav aids, waypoints, and airways may be entered in the routing field. See Nav aids, Waypoints, Airways chapter below.
- Alternates – Define alternates, including departure alternates, destination alternates, en-route alternates, and ETOPS alternates (handled in a dedicated field). All alternates will also be shown on the globe.
- Callsign – An optional field. If entered, the callsign is also displayed in the header bar for easy identification.

## Managing Flights

- New Flight – Create a new flight entry.
- Save – Save the defined flight for future reference.
- Import – Import a previously saved flight, or if enabled, a flight file provided by your operator.
- Notes – Add personal notes to accompany the flight record. Saved notes remain attached to the flight for later use.

## Supported formats for entering coordinates into Nav aids, Waypoints, Airways

Format	Example Input	Example Output (Lat, Lon)	Notes
Degrees & Decimal Minutes (DDM)	5546N17238E	55.7667, 172.6333	Degrees (2 or 3 digits) + minutes (2 digits, with decimals if needed). Hemisphere indicated by <b>N/S</b> and <b>E/W</b> .
	N554617238 5546W17238 N5546E17238	55.7667, 172.6333	Prefix notation also supported.
	554617238	55.7667, 172.6333	Without hemisphere, positive values only.
Decimal Degrees (DDD.DDD)	55172 N55.0E172.5	55.0000, 172.0000	Degrees only, with hemisphere implied by <b>N/S</b> and <b>E/W</b> .
	N55E172	55.0000, 172.0000	Prefix notation also supported.
	55N045W	55.0000, -45.0000	
Degrees, Minutes & Seconds (DDM°M'SS.S'')	554629N1723846E	55.7747, 172.6461	Degrees (2 or 3 digits), minutes (2 digits), seconds (2 digits with decimals).
	N5546291723846	55.7747, 172.6461	Prefix notation also supported.
	554629/1723846 5546291723846	55.7747, 172.6461	Separator (slash or space) accepted.

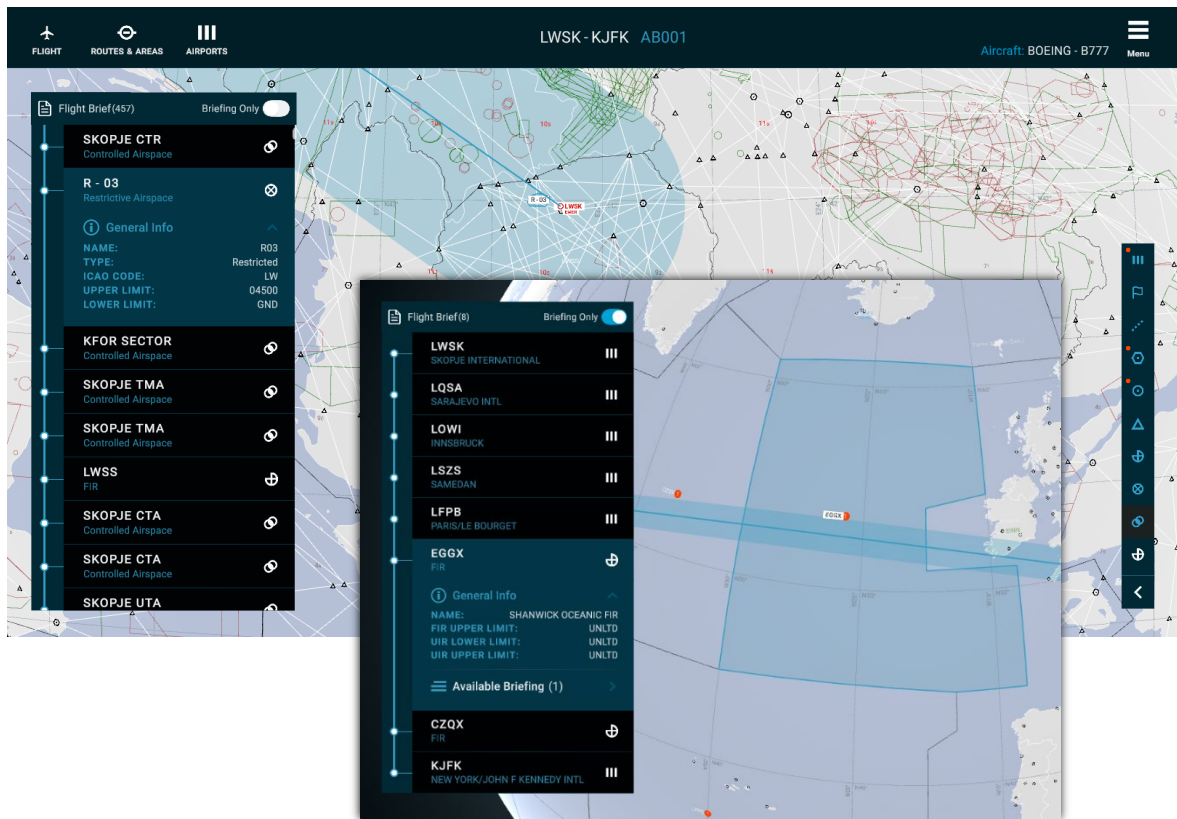
## Visualization

All flight elements entered (departure, arrival, routing, alternates) are automatically rendered on the En-Route globe. This provides an immediate visual representation of the planned flight.

### 4.2.1 Flight Brief

The Flight Brief button opens the contextual Flight Brief, consolidating all relevant airport, route, and area information for the defined flight.

The Flight Brief is one of the core features of Airport Briefing 4.0. It transforms a defined flight into a targeted, situationally aware briefing by filtering and consolidating only the content relevant to the route.



### How It Works

- When a flight is created (departure and arrival defined, with routing if applicable), Airport Briefing identifies all objects intersected by the flight path.
- These objects may include airports, FIRs, airspaces, waypoints, nav aids, and more. In the initial full view, the list may contain hundreds of objects (e.g., 457 in the example shown).
- The objects are listed in the left-hand hovering panel in chronological order, starting at the departure airport and ending at the destination airport.

### Briefing Only Mode

By default, the Briefing Only filter is enabled. This setting reduces the list to include only those objects with briefing content available through Airport, Route, or Area Briefings.

- This drastically narrows the list (e.g., from 457 objects down to just 8 with associated briefing data).
- The result is a streamlined, flight-specific briefing that eliminates noise and highlights only what the pilot actually needs to review.

### Interaction

- Selecting an item in the list expands it to show general information about the object.
- Each expanded item includes a quick link to its full briefing.
- The globe automatically rotates and centers the view on the selected object, providing immediate situational awareness.

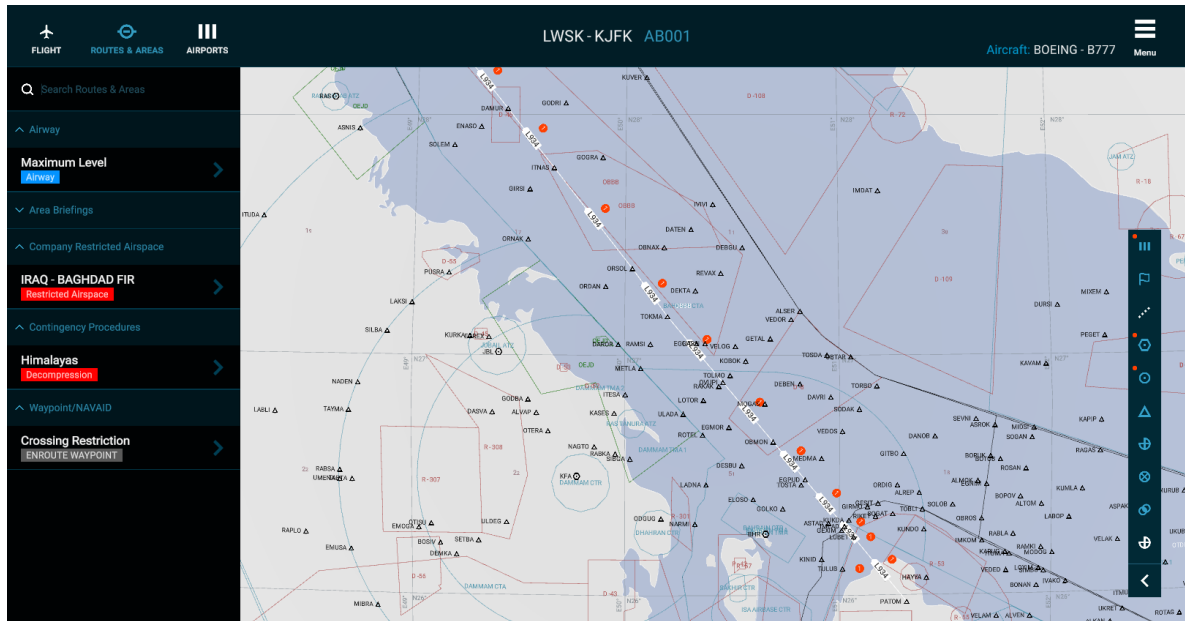
### Why It Matters

Traditional briefing packages often require pilots to sift through hundreds or thousands of pages of manuals. The Flight Brief acts like a filter, cutting away irrelevant material and leaving only what is operationally necessary for the specific flight.

- This not only saves time but also enhances clarity and focus.
- The output is a clean, contextual briefing package, ready for immediate use in pre-flight preparation or inflight reference.

## 5 ROUTES & AREAS FEATURE

The **Routes and Areas** feature provides direct access to all company-defined route and area briefings that have been downloaded onto the device through the **Content Management** page.



### Accessing Briefings

- Tapping the **Routes & Areas** button in the top bar opens a side menu displaying the available briefings.
- The menu is **organized by briefing type** (e.g., airway, area briefing, restricted airspace, contingency procedures, nav aids).
- Each Sub-Type item is color-coded for clarity, allowing you to quickly distinguish between different types of route and area content. The Types, Sub-Types and the respective color coding are also defined by your company.

### Visualization on the Globe

- All navigation objects referenced within the route and area briefings are **automatically displayed** on the En-Route globe.
- These can be shown or hidden through the **Data Layers** panel, which includes a dedicated toggle for the **Company Layer**.

### Multiple Access Points

Each route or area briefing can be accessed in three ways:

- From the **Routes & Areas menu** (as shown in the side panel).

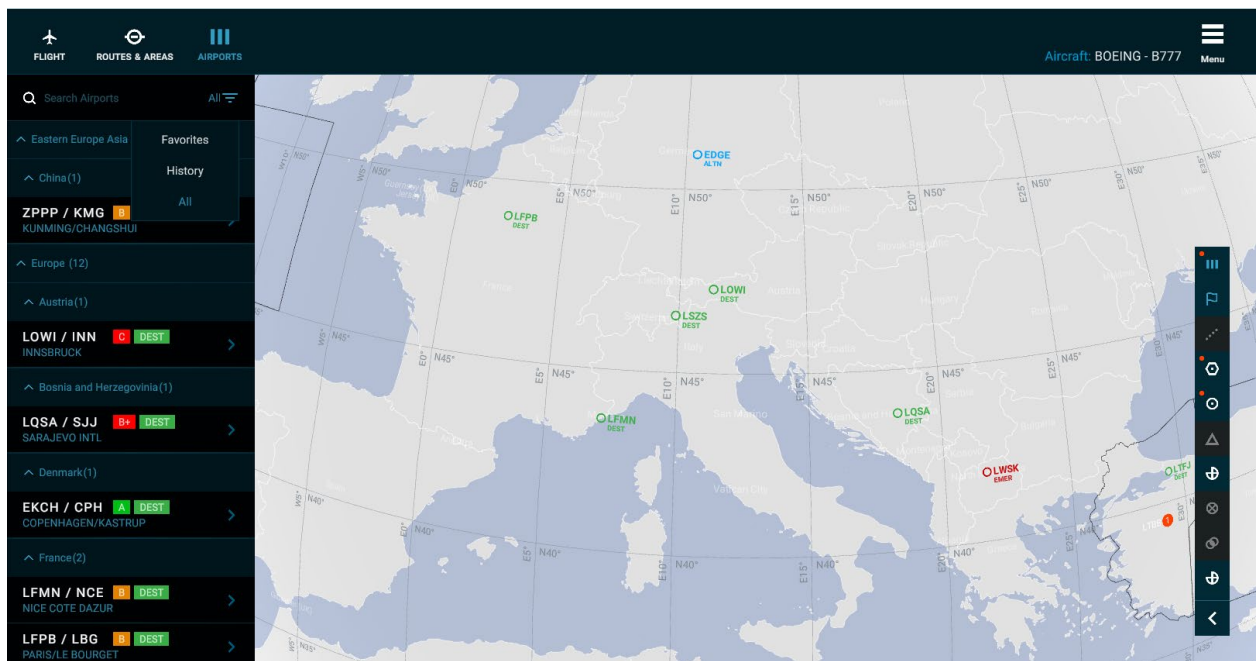
- From the **Flight Brief**, if the defined flight passes through or in the proximity of the relevant area.
- By tapping directly on the **object in the En-Route interface**.



Objects that have briefing content attached are marked with a **small orange circle**. The number inside the circle indicates how many briefings are available for that object.

## 6 AIRPORTS FEATURE

The **Airports** feature provides access to all company-assigned airport briefings available on the device. It shares the same menu structure as the Content Management page but is tailored for day-to-day briefing use.



### Structure of the Menu

- Airports are organized hierarchically by **Area → Location → Airport**.
- Each airport item shows:
  - **Category** (color-coded, reflecting company definitions).
  - **Authorization / Classification** (color-coded, reflecting company definitions).
  - **Airport name and ICAO/IATA identifiers**.

### Search and Filters

- A search bar allows quick lookup by ICAO, IATA, or airport name.
- A filter option provides three views:

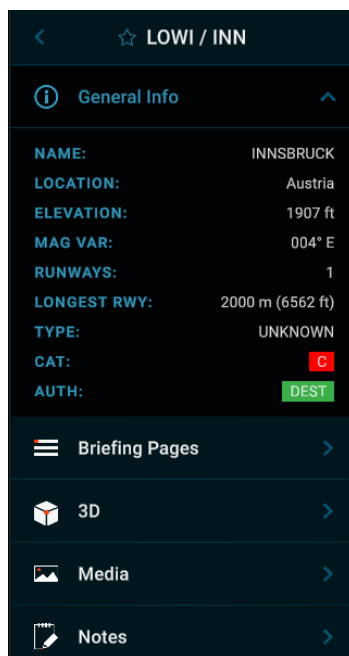
- **Favorites** – airports manually flagged by the user.
- **History** – recently accessed airports.
- **All** – the full list of company-assigned airports.

### Company vs Non-Company Airports

Only **company-assigned airports** appear in this list. **Non-Company airports**, as defined earlier, are excluded. While they may still appear on the globe for situational awareness, no briefing content is available for them.

## 6.1 AIRPORT BRIEFING – SINGLE AIRPORT VIEW

Airports within the system can be accessed in several ways: by selecting them from the Airports side menu list, by choosing them within the Flight Brief if relevant to the defined flight, or by tapping directly on the airport icon in the En-Route interface. Once accessed, the globe automatically centers on the chosen airport, and the side panel transitions into the single airport briefing view.



In this mode, the side panel displays the airport’s general information, including:

- Name and ICAO/IATA code
- Location (country or region)
- Elevation in feet
- Magnetic Variation (degrees and direction)
- Runway count and longest runway length (with dual ft/m display)
- Type (airport classification if available)
- Category (CAT) as defined by the operator (color-coded)
- Authorization (AUTH) such as DEST, ALTN, EMER, etc. (color-coded)

Below the general info, the interface provides quick access to additional briefing content through expandable sections:

- **Briefing Pages** – operator-defined briefing documents or structured pages
- **3D** – if available, an interactive 3D visualization of the airport environment
- **Media** – images, videos, or other visual briefing materials
- **Notes** – personal or operator-supplied notes attached to the airport

Note: If briefing content (e.g., 3D data) is not downloaded to the device, the section will appear grayed out. Attempting to open it will prompt the pilot with a message guiding them to download the missing data from the Content Management page.

### 6.1.1 Airport briefing – Briefing Pages

The Briefing Pages section forms the core of the airport briefing content. Once an airport is selected, the left-hand side menu expands to show a structured list of groups and individual pages defined by the operator. This structure is fully customizable and can be tailored by each company to reflect their operational, regulatory, or training requirements.

**Groups** act as expandable folders (e.g., Standard Briefing, Environment, ATC & Airspace, Operational), providing logical organization of the content.

**Pages** are the individual briefing items within these groups. Selecting a page displays the associated content on the right-hand side of the screen.

The content of briefing pages can vary in format, including:

- Predefined tables (e.g., general airport data, runway details, weather reports)
- Operator-supplied text, graphics, and PDF documents

Importantly, the structure and naming of groups and pages are defined by the company, ensuring alignment with company procedures, authorization requirements, and compliance standards. This flexibility allows Airport Briefing to serve as both a standardized briefing platform and a company-specific knowledge base.

### Briefing Sections

 General

Airport Name:	JOHN F KENN
ICAO ID:	KJFK
IATA ID:	JFK

The Briefing Pages contain sections, each one with its title and content. For better readability and user experience, you can collapse and expand the content of each section by tapping on the section title (e.g. General).

### Aircraft and Date filtering

If the operator is using the aircraft and or date filtering options, Airport Briefing will filter out the content and present it to you based on your selected aircraft and present date.

## 6.2 USING THE 3D FEATURE

The 3D feature in Airport Briefing provides an immersive, interactive briefing environment designed to deliver high-fidelity visualizations of airports and their surroundings. It combines structured briefing instructions with extensive use of 3D models, enabling pilots to explore runways, taxiways, terrain, and much more in a highly intuitive way. By engaging with the airport in three dimensions, pilots can significantly enhance both familiarity and

spatial awareness, gaining a more accurate mental model of the operational environment before arrival or departure.

The system allows users to tailor the visualization by simulating different daylight conditions (dawn, daylight, dusk, night) and meteorological scenarios, ensuring preparation for a wide range of operating environments. This flexibility makes the 3D feature a powerful complement to textual and tabular briefing data, turning complex airport layouts and environmental factors into a clear, visual experience that improves comprehension and reduces cognitive workload..

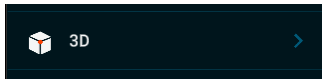
### 6.2.1 The benefit of interactive 3D

As the acquisition and interpretation of information is highly influenced by expectations, pre-flight briefing is crucial. The idea behind intensive pre-flight briefings and the use of multi-media tools is to help pilots develop a clear picture of their flight. By being able to 'fly-through' the departure or approach in advance, pilots can develop a better mental picture of the environment. - Adapted from Endsley & Robertson (2000)

### 6.2.2 3D View Layout



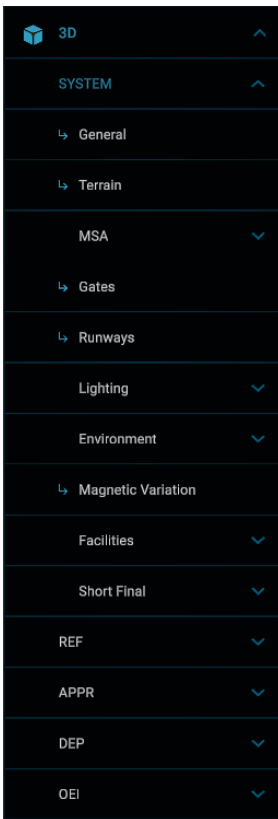
### 6.2.3 Accessing the 3D feature



You can access the 3D feature of an airport by tapping on the 3D feature button on the main side-menu, just below the BRIEFING feature.

**Note:** Non-3D airports will have this button grayed-out if it is not available.

### 6.2.4 Slides or Programmed Instructions



Depending on your setup, you may see all or a combination of the following briefing group options:

1. **SYSTEM** – Auto-generated (Data-driven) Briefing Slides or Programmed Instructions
2. **REF** – A placeholder for company created content in 3D. The name of this tab is defined by the company.
3. **APPR** – Approach Familiarization Slides
4. **DEP** – Departure Familiarization Slides
5. **OIE** – One-Engine Inoperative Slides

Each briefing group option expands a sub-menu with slides or programmed instructions providing you with a briefing content and guided structure for your briefing process.

Each Slide or Programmed Instruction can hold information on a specific topic, being a threat, airport or surrounding feature, point of importance, or similar.

When you tap on a particular slide, Airport Briefing moves the camera to a predefined location, sets the daylight and meteorological conditions, and shows a variety of information in and out of the camera view.

**IMPORTANT NOTE:** Airport Briefing visually depicts SID and APPR procedures in 3D for familiarization purposes and to support situational awareness. Make sure you always reference the SID or APPR procedures from approved source.

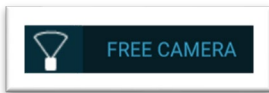
**CAUTION:** The visualization of approach and departure procedures is presently in experimental mode and may contain errors. Please report all errors so we can continuously improve the visualization and simulation logic.

### 6.2.5 Moving around the scene

The 3D feature has two cameras for you to choose from. You can toggle between the two by tapping on the Camera Type button in the top left part of the screen.

#### Target camera.

**Free camera.** With the free camera selected, you can be looking around without moving the camera position. Whenever you are interacting with the target camera, a crosshair with diagonal bars appears on the screen momentarily.



The following table provides details on finger gestures and mouse/keyboard actions for interaction with the cameras.

Action	Tablet (touch screen)
	Desktop (mouse & keyboard)
Orbit (move camera around the target) Look around (Free camera)	<b>Tap and drag</b>
	Click and drag
Quickly move to a desired location	<b>Double Tap on terrain</b>
	Double Click on terrain
Zoom	<b>Two-finger pinch</b>
	Scroll wheel
Pan	<b>Two-finger drag</b>
	Middle-mouse button drag
Free Flight (Keyboard only)	Not applicable
	Keys A, W, S, D

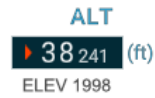
### 6.2.6 Heading and Altitude information

The magnetic compass shows the present heading of the camera as you turn around in the scene.



The altimeter provides you with the present altitude of the camera above mean sea level. When in flight-path simulation

mode, the altimeter is showing the altitude of the flight path below the aircraft model as it flies through the procedure.



### 6.2.7 Changing the Weather

You can change the weather on the scene anytime by tapping on the WX button in the 3D view which will open a contextual pop-up menu with a variety of weather options.



**PRESETS.** A list of pre-defined weather sceneries. Each selection will change the environment according to your selection.

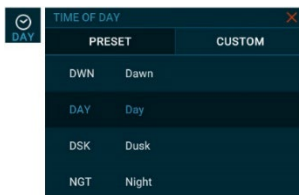
**METAR.** If available, the latest METAR will be presented and Airport Briefing will attempt to simulate the actual conditions based on the report.

**TAF.** If available, the latest TAF will be broken down and distributed accordingly into rows or buttons for you to choose from. Just like the METAR, Airport Briefing will try and simulate each of the options upon selection.

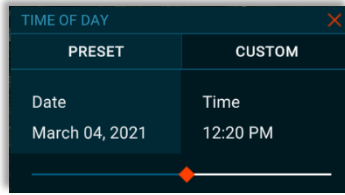
**Note:** If the weather engine is set to 'Basic Environment' the contextual pop-up menu only allows modification of the overall visibility on the scene.

### 6.2.8 Changing the Time of Day

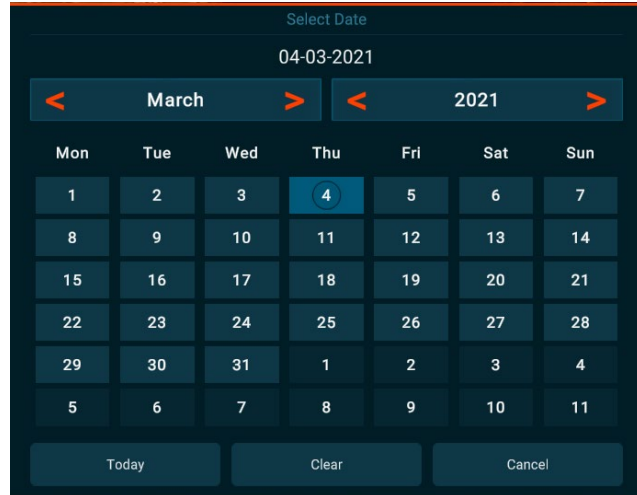
Airport Briefing 3D engine is utilizing a physically-based environment relative to the geo-location of the airports. You can change the local time of day on the scene anytime by tapping on the TIME button in the 3D view which will open a contextual pop-up menu with a variety of date/time options.



**PRESETS.** A list of pre-defined time of day presets. Each selection will change the environment according to your selection.

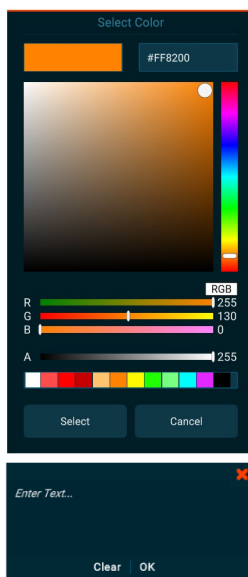


**CUSTOM.** If you wish to manually adjust the date and time you can do so by tapping on the custom tab. Here you can adjust the time via the time slider or access the date picker by tapping on the Date section.



**Note:** If you feel that the scene lighting is too dark during the 'Day' hours, try changing the date or month towards the summer or winter months which will, in turn, increase the elevation of the sun above the horizon and increase the scene lighting intensity.

### 6.2.9 Using the Pen Tool



Use the pen tool to draw or annotate important points directly in the 3D view and save as visual note under your account, for the given airport.

With the given pen tool controls you can:

- Adjust the brush size
- Adjust the color and opacity of your brush
- Insert and position custom text on the view
- Undo changes
- Save the image in your PERSONAL MEDIA folder for the given airport.

**Note:** To save the image, it is required that you insert a desired filename for the same before saving.

### 6.2.10 Play a slide Voice-Over Audio



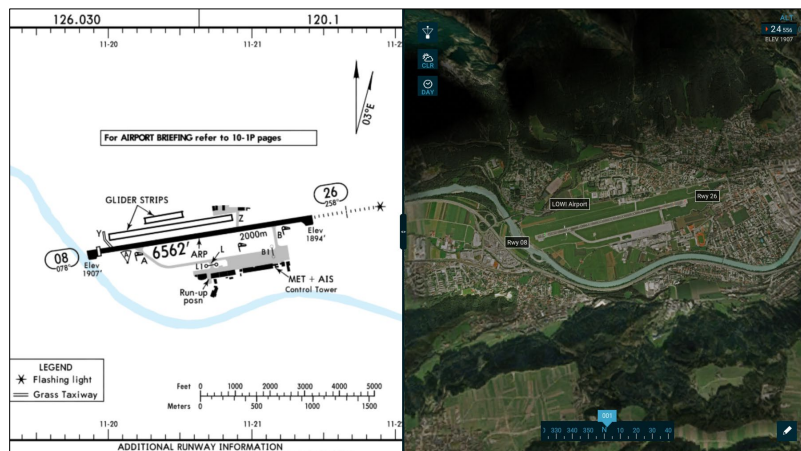
Some slides or programmed instructions may have embedded description that Airport Briefing can read it out loud to you.

When available, you can play the voice-over audio by tapping on the voice-over button which appears at the bottom-left corner of the the 3D view.

### 6.2.11 Show a slide Attachment

Some slides or programmed instructions may have embedded PDF Attachment or Image that you can recall in split-screen view mode.

When available, you can recall the attachment on the screen by tapping on the attachment button which appears at the bottom-left corner of the the 3D view.



### 6.2.12 Flight Path Simulation

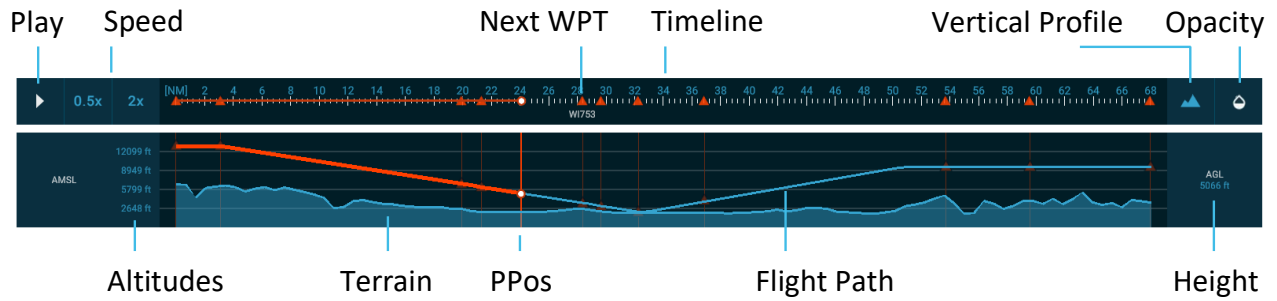


Certain REF and OEI slides, and all APPR and DEP slides have an embedded flight simulation data or functionality. When such slides are selected, the SIMULATION button will appear in the bottom-left corner of the 3D view.

To activate a simulation for a given flight path:

1. Tap the button to show the simulation timeline
2. Tap on the Play button to start the simulation. The presently selected camera will go and play from the beginning of the flight path or the PPos position if moved.

Tap on the Terrain button to show the vertical profile information below the simulation timeline. This may greatly enhance your simulation experience.

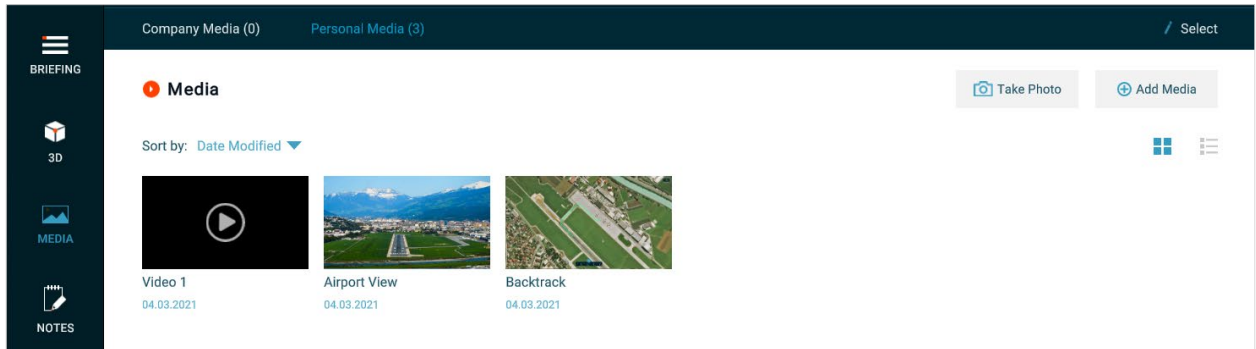


Sometimes you may want to reduce the flight path opacity to be able to see better the environment below the flight path. You may do so by tapping on the Opacity toggle button which will in-turn cycle through five pre-defined opacity levels from 0 to 100%.

**Note:** Deselecting the Flight Path Simulation mode will force the camera to return back to its initial (airport load) view.

### 6.3 WORKING WITH MEDIA FILES

The MEDIA feature allows organized storage of personal videos and images as well as controlled dissemination of operator media files.



To add a new photo or video:

- Open Media.
- Tap the Take Photo or Add Media button.
- Take a photo or select the file from your drive.
- Tap Done.

**Note:** Your personal files are stored under the Personal Media tab, and accessible only to you, whilst operator files are stored under the Company tab.

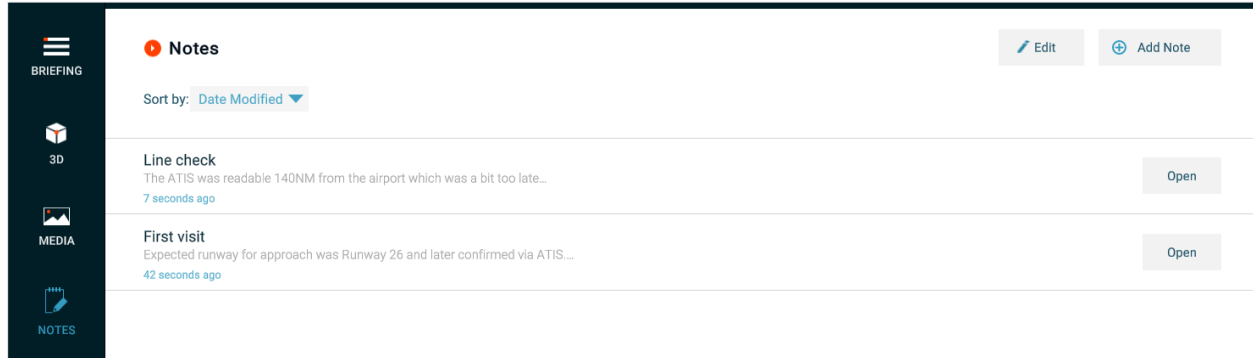
To delete a photo or video:

- Open Media.
- Tap the Select button from the top bar.
- Select the file from the Media view.
- Tap the delete button on the bottom right corner of the screen.

**Note:** Media files from the Company tab cannot be deleted by the user.

## 6.4 TAKING NOTES

With NOTES, you can capture a quick thought or record your experience for later review when operating to an airport.



To create a new note:

- Open Notes.
- Tap the Add New button, add a title and then create your note.
- Tap Done.

To delete a note:

- Open Notes.
- Tap the Edit button to show Delete buttons next to each note.
- Tap the delete button.

**Notes:**

- You can sort your notes by Name or Date Modified using the 'Sort by' dropdown function.
- Notes are personal data and stored under your account for each airport individually.